

Integrated High-Power Base Station Product Introduction

Product Overview

The integrated high-power base station integrates BBU and RU, featuring high-power wide coverage, easy deployment and low operation and maintenance costs.

Technical Features

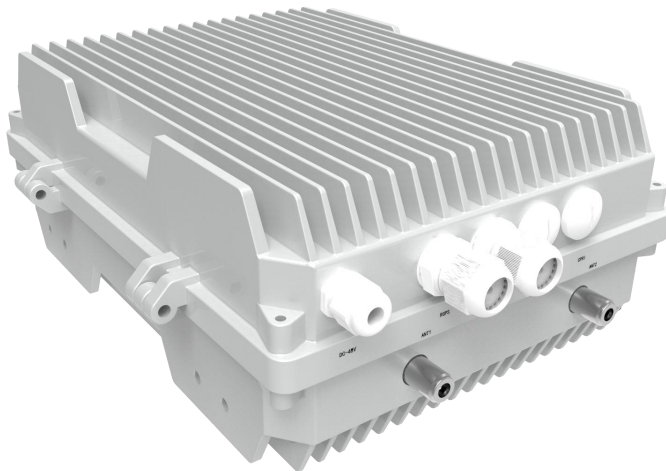
- ✓ Highly integrated design
- ✓ High-power radio frequency capability
- ✓ High reliability and environmental adaptability
- ✓ Intelligent management
- ✓ Support MIMO

Application Scenarios

- ✓ Wide-area coverage scenarios, such as remote villages, transportation trunk lines, etc.
- ✓ Large venues/exhibition centers
- ✓ Emergency communication scenarios
- ✓ Industrial Internet scenarios

Product Specifications

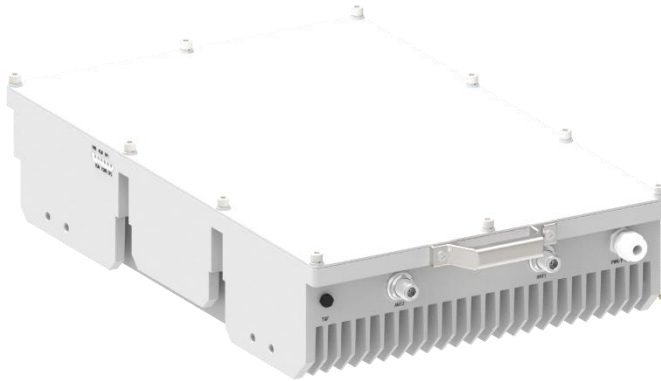
LTE Integrated 2*37dBm/2*46dBm/2*47.8dBm



Integrated 2*37dBm/2*46dBm/2*47.8dBm	
Band	B1/B3/B5/B8/B28/B7
Carrier bandwidth	5/10/15/20 MHz
Nominal output power	2*37dBm/2*46dBm/2*47.8dBm
Peak rate	DL/150Mbps; UL/75Mbps (FDD,20MHz/carrier BW)
User No.	Supports 64 access users, 32 service users
Synchronous mode	RGPS, 1588; $\pm 0.01\text{ppm}$
ANT	2*N-K
Backhaul interface	1*RJ45 GE; 1*SFP+ GE
EVM	QPSK < 17.5%, 16QAM < 12.5%, 64QAM < 5%
Sensitivity	$\leq -100\text{dBm/ANT}$ (FDD LTE:3GPP TS 36.141)
ACLR	$\leq -45\text{dBc}$
VSWR	≤ 1.5
Temp/Humidity	-40°C ~ +55°C; 10% ~ 90%
IP rating	IP65
Power consumption	$\leq 120\text{W}$ (2*37dBm) $\leq 400\text{W}$ (2*46dBm) $\leq 550\text{W}$ (2*47.8dBm)
Power supply mode	AC 220V or DC 48V
Dimension (L*W*H)	$\leq 316\text{mm} \times 223\text{mm} \times 133\text{mm}$ (2*37dBm) $\leq 380\text{mm} \times 280\text{mm} \times 160\text{mm}$ (2*46dBm) $\leq 450\text{mm} \times 315\text{mm} \times 181\text{mm}$ (2*47.8dBm)
Weight	< 11.8kg(2*37dBm); $\leq 12.5\text{kg}$ (2*46dBm); < 18kg(2*47.8dBm)
Installation	Wall mounted, pole mounted

Product Specifications

NR Integrated 2*46dBm



Integrated 2*46dBm	
Band	N28/N1
Carrier bandwidth	10/20/30/40 MHz
Nominal output power	2*46dBm
Peak Rate	DL/200Mbps; UL/100Mbps (FDD,20MHz/carrier BW)
User No.	Supports 400 access users, 200 service users
Synchronous mode	RGPS, 1588; $\pm 0.01\text{ppm}$
ANT	2*N-K
Backhaul interface	1*SFP+ 10GE
EVM	QPSK < 17.5%, 16QAM < 12.5%, 64QAM < 5%, 256QAM < 3.5%
Sensitivity	$\leq -103\text{dBm/ANT}$ (FDD NR:3GPP TS 38.141)
ACLR	$\leq -45\text{dBc}$
VSWR	≤ 1.5
Temp/Humidity	-40°C ~ +55°C; 10% ~ 90%
IP rating	IP65
Power consumption	$\leq 400\text{W}$
Power supply mode	AC 220V or DC 48V
Dimension (L*W*H)	$\leq 470\text{mm} \times 330\text{mm} \times 107.5\text{mm}$
Weight	$\leq 18\text{kg}$
Installation	Wall mounted, pole mounted